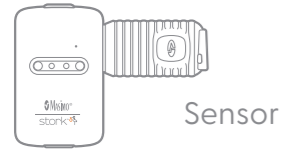


Quick Start Guide



What's in the box?



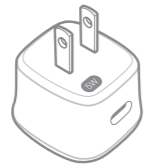
Sensor



Sensor Charge Cable and Cable Clip



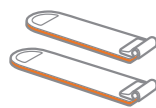
Medium Boot (Size 4 Strap Pre-Attached)



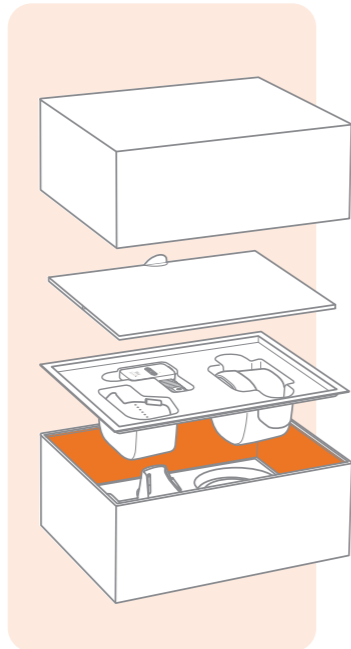
5W Sensor Charge Adapter



Small Boot (Size 3 Strap Pre-Attached)



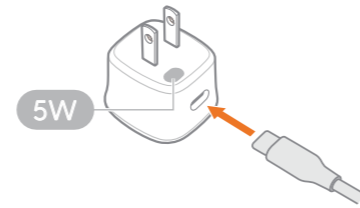
Size 1 and Size 2 Straps



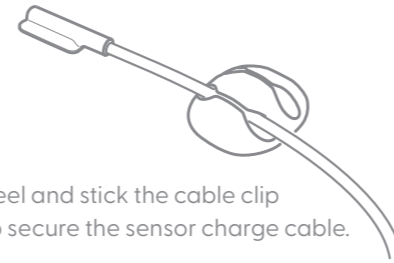
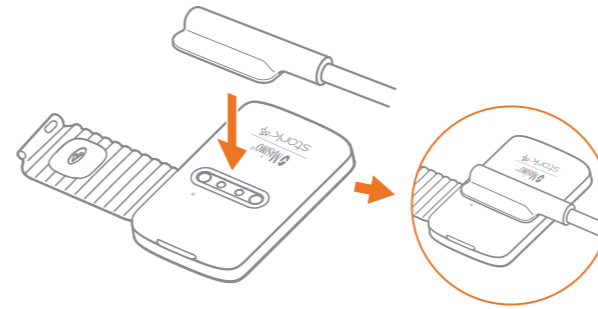
Not intended for use as a medical device or to replace a medical device. Do not use it to diagnose, cure, treat, alleviate, or prevent any disease or health condition.

Charge the sensor

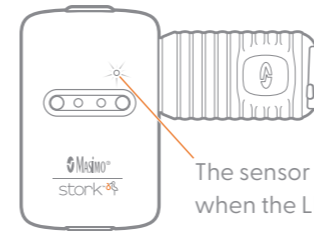
Plug the Sensor Magnetic Charge Cable into the 5W power adapter.



Connect the magnetic end of the cable to the sensor. Fully charge the sensor before use.



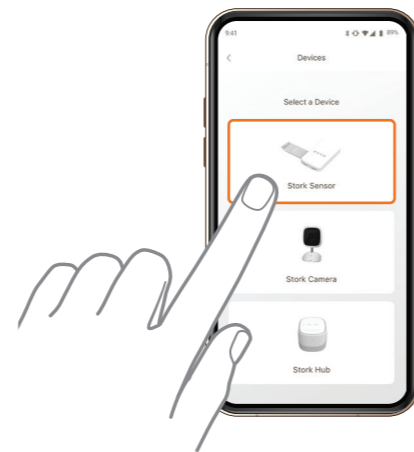
Peel and stick the cable clip to secure the sensor charge cable.



The sensor is fully charged when the LED turns white.

Pair the sensor to the app

Download the Stork app and follow instructions.



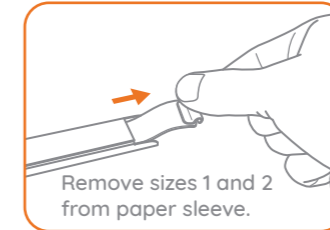
The app screens shown in this document might differ from the actual ones displayed in the app.

Add straps to sensor and boot

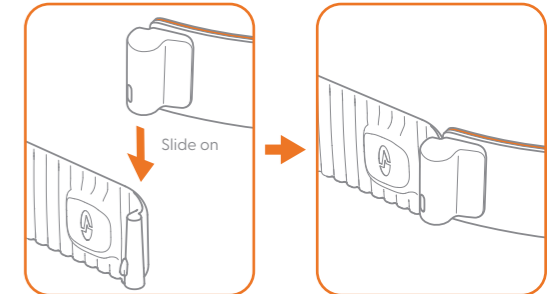
Size 1 strap (for newborn foot)



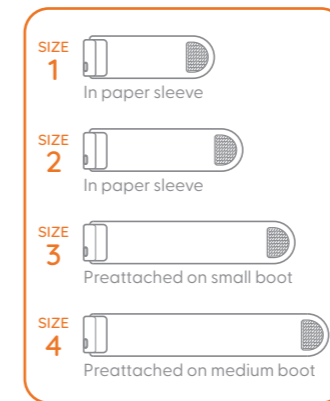
Slide on



Remove sizes 1 and 2 from paper sleeve.



Slide on

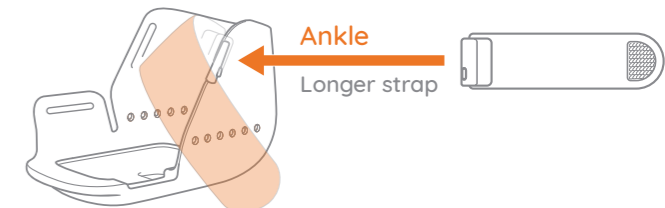


SIZE 1
In paper sleeve

SIZE 2
In paper sleeve

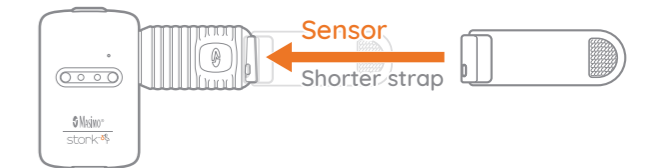
SIZE 3
Preattached on small boot

SIZE 4
Preattached on medium boot



Ankle

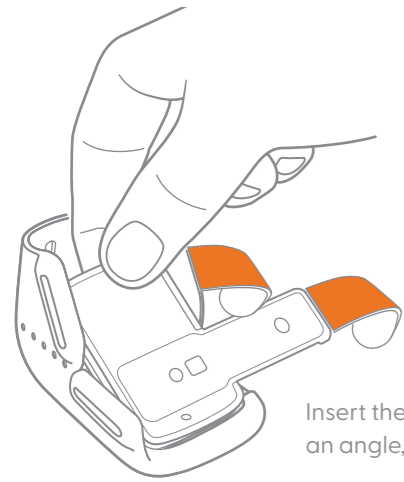
Longer strap



Sensor

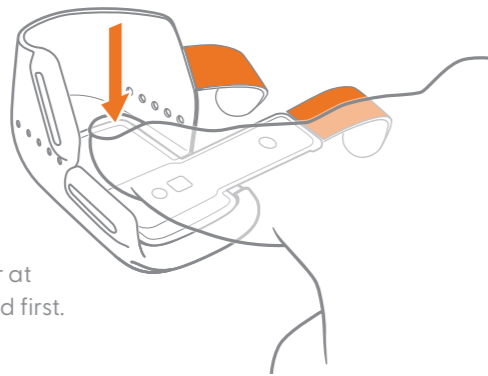
Shorter strap

Insert Sensor Into Small Boot

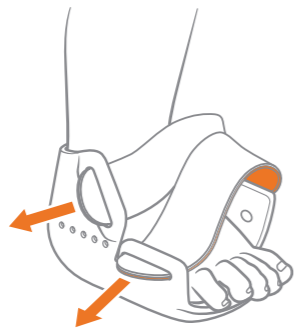


Insert the sensor at an angle, toe end first.

Press down to secure the sensor. The sensor should sit flush in the boot.



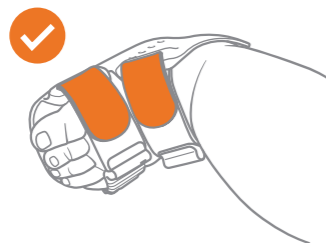
Apply Boot to Either Foot



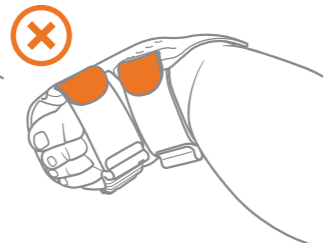
Check the Strap Length



Too long
(Velcro not on fabric)

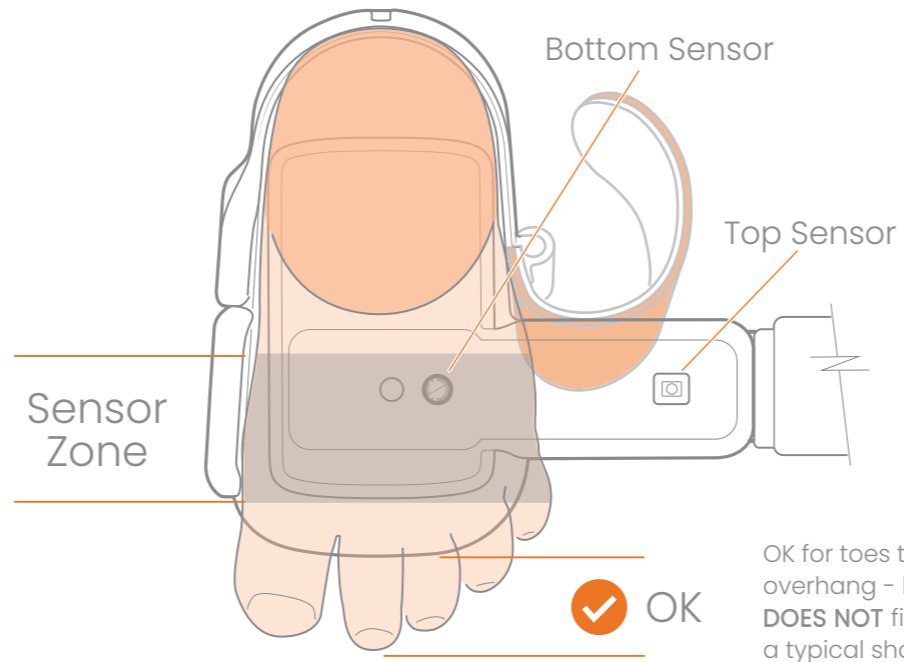


Perfect!



Too short

Boot Sizing (Using Small Boot As Example)

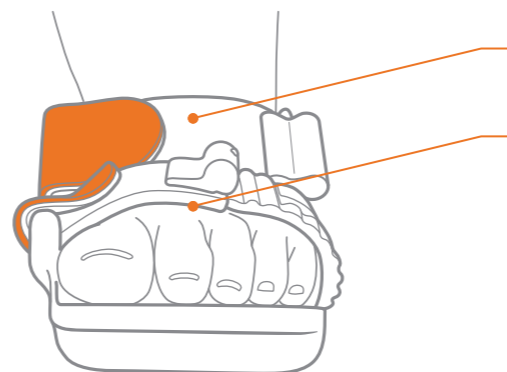


OK

OK for toes to overhang - boot **DOES NOT** fit like a typical shoe.

IMPORTANT NOTE
Make sure all sensors are making good contact with the baby's skin to ensure correct measurement.

Strap Tightness

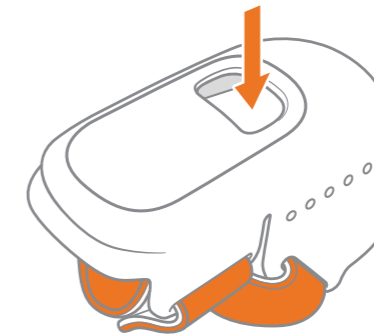


The ankle strap should be snug but not tight.

The sensor strap should sit flush against the top of the foot, with no gap.

Boot and sensor maintenance

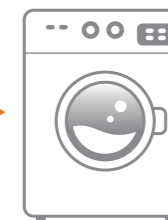
Remove Sensor



To remove the sensor, push it from the opening at the bottom of the boot.

Cleaning Sensor and Boot

Remove the sensor and place just the boot (and the straps if desired) in the washing machine.



Do not put the sensor in the washing machine

Dampen a cloth with water to wipe the components of the Stork System (sensor is shown in the example). Bleach wipes or 70% isopropyl alcohol can also be used.

Do not use household cleaning agents.



OWNER'S MANUAL

Refer to the online manual for other functions, information, and operation details.

masimostork.com/vitals-plus-user-manual

